

# TARA COVE

A PORTION OF THE SOUTHEAST QUARTER OF THE SOUTHEAST QUARTER OF THE NORTHWEST QUARTER OF SECTION 13, TOWNSHIP 43 SOUTH, RANGE 42 EAST, PALM BEACH COUNTY, FLORIDA.

# 188

State of Florida }  
County of Palm Beach } SS

THIS PLAT WAS FILED FOR RECORD AT \_\_\_\_\_ M.

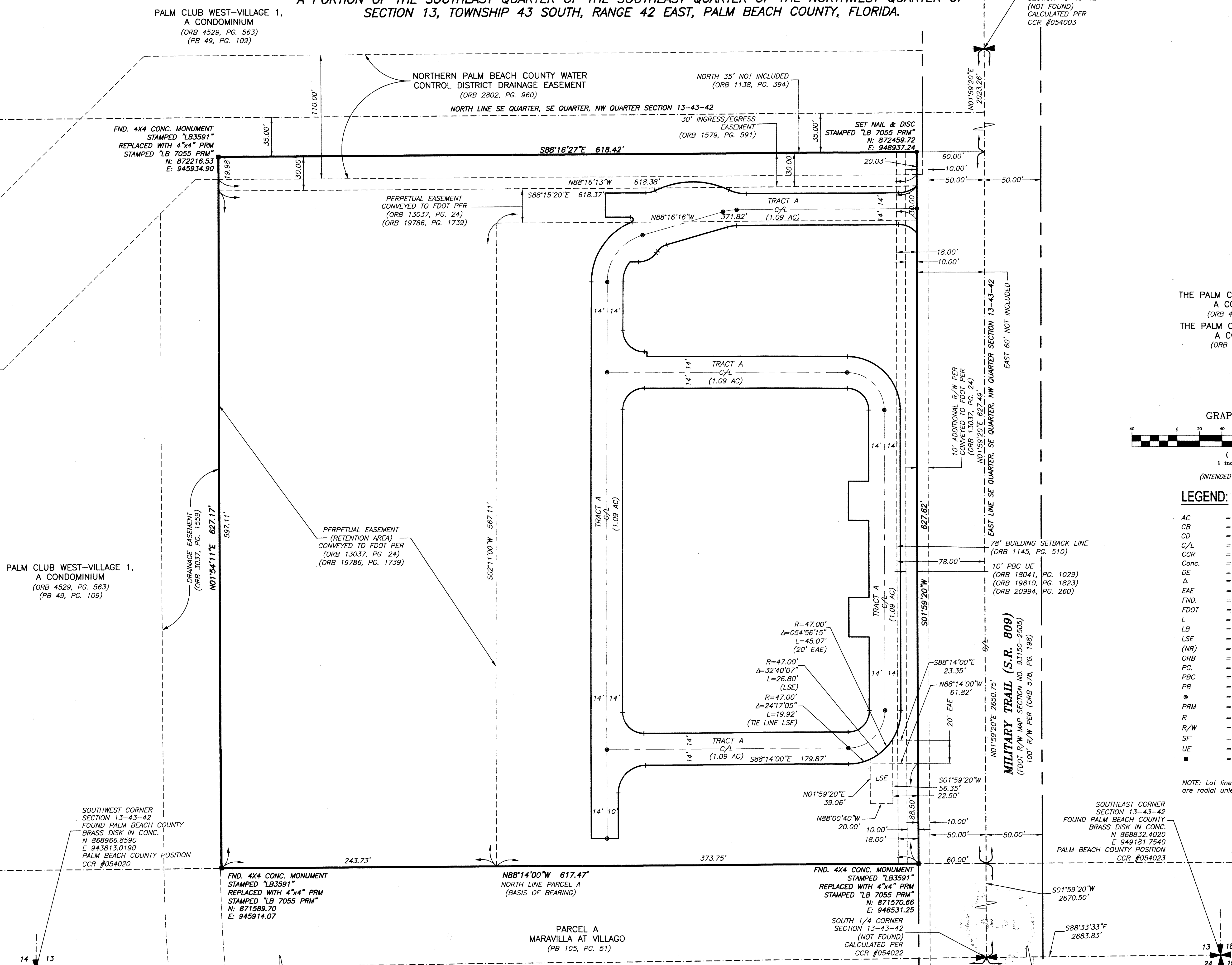
THIS \_\_\_\_\_ DAY OF \_\_\_\_\_ A.D. 2015 AND DULY RECORDED

IN PLAT BOOK \_\_\_\_\_ ON PAGES \_\_\_\_\_ THROUGH \_\_\_\_\_

SHARON R. BOCK, CLERK AND COMPTROLLER

BY: \_\_\_\_\_ DEPUTY CLERK

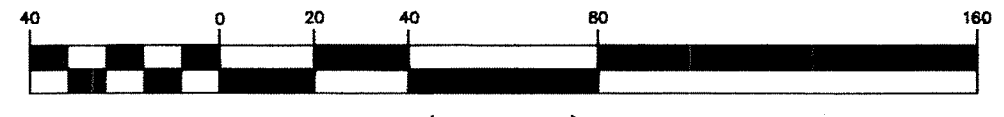
SHEET 6 OF 6 SHEETS



THE PALM CLUB VILLAGE 1-#1, A CONDOMINIUM (ORB 4039, PG. 1229)  
THE PALM CLUB VILLAGE 1-#2, A CONDOMINIUM (ORB 4083, PG. 1564)



GRAPHIC SCALE



(INTENDED DISPLAY SCALE)

### LEGEND:

- AC = Acres
- CB = Chord Bearing
- CD = Chord Distance
- C/L = Center Line
- CCR = Certified Corner Record
- Conc. = Concrete
- DE = Drainage Easement
- Δ = Delta (Central Angle)
- EAE = Emergency Access Easement
- FND. = Found
- FDOT = Florida Department of Transportation
- L = Length of Arc
- LB = Licensed Business
- LSE = Lift Station Easement
- (NR) = Non-Radial
- ORB = Official Records Book
- PG. = Page
- PBC = Palm Beach County
- PB = Plat Book
- = Permanent Control Point (PCP)
- PRM = Permanent Reference Monument
- R = Radius
- R/W = Right-of-Way
- SF = Square Feet
- UE = Utility Easement
- = Set 4"x4" Concrete (PRM) & Aluminum Disc Stamped "LB 7055 PRM" Unless Otherwise Noted

NOTE: Lot lines intersecting circular curves are radial unless otherwise noted.

**WGI**  
Wantman Group, Inc.

Engineering ♦ Planning ♦ Surveying ♦ Environmental  
2035 VISTA PARKWAY, SUITE 100, WEST PALM BEACH, FL 33411  
(888) 909-2220 phone (561) 687-1110 fax  
CERTIFICATE OF AUTHORIZATION No. LB 7055  
ORLANDO - PORT ST. LUCIE - TAMPA  
THIS INSTRUMENT WAS PREPARED BY ERIC R. MATTHEWS, P.S.M.  
PROFESSIONAL SURVEYOR AND MAPPER, LICENSE NO. 6717  
FOR THE FIRM: WANTMAN GROUP, INC.